

Carnivorous Plants Catalogue November 1999-2000

Allen Lowrie
6 Glenn Place,
Duncraig, 6023
Western Australia.

Phone: 08 - 9447 - 7426
Fax: 08 - 9246 - 9335

© A. Lowrie 1999



Aldrovanda vesiculosa

This catalogue replaces all preceding lists. This main catalogue is sent out once per year, generally around November-December. Clients who have made purchases in the previous year as well as all new inquiries in this same period automatically receive the new season's catalogue the following season. All other names and addresses (because of high mailing costs) will be deleted from the mailing list.

Trading terms

Packaging and airmail postage, please add \$6 Australia, \$12 overseas per order for tuberous *Drosera* or seeds. For other items the packaging and postage rates are given in that section.

Payment: cash, (Australian, U.S. dollars, Canadian dollars, Japanese Yen, German Marks, French Francs or English pounds accepted at the American Express or Thomas Cook cash note exchange rates of the day) send registered post-signature required for complete safety. Overseas International money orders through Japanese or English-European post offices please add \$10 for Girobank fees (please note! Girobank via post offices in England-Europe pays in pounds Sterling, therefore an additional fee of \$20 is required for clearance through Australian banks). Overseas Banker's cheques only accepted (personal cheques not accepted) in Australian dollars from overseas customers, no \$20 fee clearance needed. Overseas banker's cheques in other denominations other than Australian dollars please add \$20 to order for Australian bank clearance. Overseas bank cheques only accepted where that particular overseas bank has a bank clearing house agency in Australia. Australian customers.....cash, Australia Post money orders or personal cheques accepted.

Tuberous *Drosera*

Lot Sales: e.g. 2 for \$6 can not be ordered as single tubers.

Please note! Tubers of tuberous *Drosera* listed will only be available until March 2000.

<i>Drosera andersoniana</i> pink flowers.....	\$6.50
<i>Drosera andersoniana</i> white flowers.....	\$6.50
<i>Drosera bulbigena</i>	\$5.00
<i>Drosera bulbosa</i> subsp. <i>bulbosa</i> eastern wheatbelt form.....	\$6.00
<i>Drosera bulbosa</i> subsp. <i>major</i>	\$8.00
<i>Drosera erythrorhiza</i> subsp. <i>erythrorhiza</i>	2 for \$6.00
<i>Drosera erythrorhiza</i> subsp. <i>collina</i>	\$6.00
<i>Drosera erythrorhiza</i> subsp. <i>magna</i>	\$6.50
<i>Drosera erythrorhiza</i> subsp. <i>squamosa</i>	\$8.50
<i>Drosera erythrorhiza</i> aff. <i>squamosa</i> "Scott River" leaves with red margins, plants asexually produce a compact colony.....	\$6.00
<i>Drosera gigantea</i>	\$10.00
<i>Drosera graniticola</i>	\$7.50
<i>Drosera heterophylla</i>	\$6.50
<i>Drosera intricata</i> Planchon "yellow flowers".....	\$7.00
<i>Drosera lowriei</i> deep maroon plant.....	\$5.00
<i>Drosera</i> aff. <i>macrantha</i> "rock outcrop form".....	2 for \$6.00
<i>Drosera macrantha</i> "desert form" pink flowers.....	\$6.00
<i>Drosera macrantha</i> "Wongan Hills form" juvenile plants remaining as a flat leafy rosette to 3 cm o, for up to 5 years, before climbing habit commences, during this time asexually reproducing additional tubers via stolons from the centre of plant as well as below to form a compact colony, visually lots of fun.....	2 for \$6.00
<i>Drosera macrantha</i> subsp. <i>eremaea</i>	\$6.00



Drosera zigzagla Lowrie

<i>Drosera marchantii</i> subsp. <i>marchantii</i>	\$6.00
<i>Drosera macrophylla</i> subsp. <i>macrophylla</i> 5-6 flowers per scape.....	\$6.50
<i>Drosera macrophylla</i> subsp. <i>monantha</i> uni-flowered scapes.....	\$7.50
<i>Drosera menziesii</i> subsp. <i>menziesii</i> red plants.....	\$5.00
<i>Drosera menziesii</i> subsp. <i>basifolia</i>	\$6.00
<i>Drosera moorei</i> (Diels) Lowrie "yellow flowers".....	\$6.50
<i>Drosera orbiculata</i>	\$5.00
<i>Drosera peltata</i> "W.A. form" orange plant, small white flowers (see C. P. of Australia vol. 1).....	\$7.00
<i>Drosera ramellosa</i> white flower.....	\$6.00
<i>Drosera rosulata</i> "type" obovate lamina.....	\$6.00
<i>Drosera rosulata</i> "Hills form" plants red, leaves with narrow petioles and elliptic lamina.....	\$6.00
<i>Drosera stolonifera</i> subsp. <i>stolonifera</i> "hills form" plants reddish with age.....	\$7.50
<i>Drosera stolonifera</i> subsp. <i>stolonifera</i> "swamp form" plant foliage remaining a beautiful golden-green over entire life cycle.....	\$7.50
<i>Drosera stolonifera</i> subsp. <i>porrecta</i> "southern swamp margin form" plants green with maroon glands to 45 cm tall.....	\$8.00
<i>Drosera stricticaulis</i>	\$6.50
<i>Drosera subhirtella</i> Planchon "yellow flowers".....	\$7.00
<i>Drosera tubaestylis</i> "Type".....	\$5.00
<i>Drosera tubaestylis</i> "multi-flowered form".....	\$5.00
<i>Drosera whittakeri</i> subsp. <i>aberrans</i>	\$7.00
<i>Drosera zigzagia</i> Lowrie "yellow flowers".....	\$7.00
<i>Drosera zonaria</i>	\$7.00



Drosera intricata
Planchon

Note! If you are interested in obtaining tuberous *Drosera* that are not listed please inquire and/or request a "limited tuberous *Drosera* availability list" and their prices.

Lucky dip! We have a number of stray (not named) tubers (mostly from the above list) that can easily be identified from the books *Carnivorous plants of Australia* Vols 1, 2 & 3 when these tubers resume growth. To save ourselves a lot of extra work in sorting these tubers out later in the 2000 growing season we are offering these to you at the rate of 12 tubers for \$30.00.

Utricularia

Utriculata menziesii dormant tuber groups, red flower, yellow palate\$8.00

Utriculata menziesii dormant tuber groups, red flower, orange to red palate\$8.00



Books

Utricularia menziesii

Carnivorous Plants of Australia: Vol. 1 by Allen Lowrie
1987. 21.0 X 14.0 cm, 230 pages, 133 colour plates, numerous line drawings, location maps, glossary, indexes.
Cloth and paper back (Sold out).....none available from publisher, and when available on the market, selling for extremely high prices.

Carnivorous Plants of Australia: Vol. 2 by Allen Lowrie
1989. 21.0 X 14.0 cm, 240 pages, 172 colour plates, numerous line drawings, location maps, glossary, indexes.
Cloth and paper back (Sold out).....none available from publisher, and when available on the market, is significantly increasing in price.

However, we buy copies of vol. 2 here in Australia as and when we come upon them. We have been paying varying prices for copies, depending on condition, to which we have added a small markup for the final sale price. We currently have the following vol. 2's in stock along with a report of their condition.

Cloth back vol. 2 very good condition....10 books only available priced \$122, \$126, \$132,

\$135, \$136 x2, \$138, \$140, \$142 and \$145 and excellent condition....4 books only available priced \$155, \$160, \$180, \$195 signed by author on request.

Cloth back vol. 2 cover slightly damaged.....2 books only available priced \$110 each signed by author on request.

Cloth back vol. 2 cover damaged.....6 books only available priced \$60, \$65 x2, \$70 x 2, and \$75 signed by author on request.

Carnivorous Plants of Australia: Vol. 3 by Allen Lowrie
1998. 21.0 X 14.0 cm, 288 pages, 343 colour plates, covering 57 taxa including *Drosera* not covered in vols 1 & 2, as well as *Aldrovanda*, *Byblis*, *Utricularia*, *Nepenthes* and *Cephalotus*, 57 line drawings, location maps, glossary, comprehensive index and keys for identification of specimens presented in all three volumes in the series.

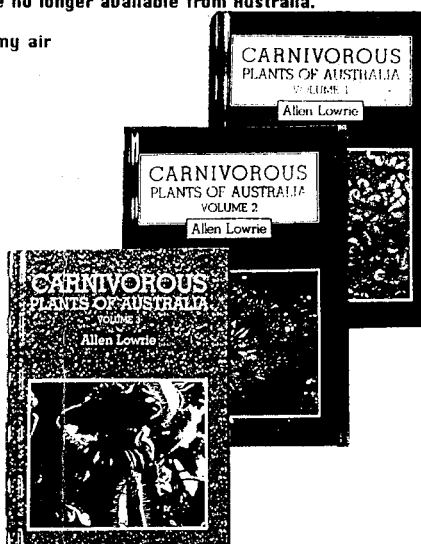
Cloth back only.....\$45 signed by author on request.

Please note! the book postage rates are based on October 1999 postage rates and maybe subject to change.

Postage and packaging anywhere in **Australia** for one or two books **Airmail \$10**

Postage and packaging **overseas**: * One book, ** two books or *** three books in the one parcel postage and packaging dollar rates below. For more than three books in the one parcel add † dollar rate for each additional book (on top of the three book rate) up to a maximum of 20 books per parcel. e.g. 6 books airmail to Japan:— first 3 books @\$47 plus 3 extra books @ \$13 each (\$39) = Total of \$86 for packaging and postage for 6 books to Japan or \$14.33 per book. Note! **Sea mail service no longer available from Australia.**

	Airmail	Economy air
Japan,	*\$27	* \$24
China,	** \$39	** \$33
India	*** \$47	*** \$39
& S.E.	† \$13	† \$9
Asia		
England,	*\$34	* \$28
Europe,	** \$51	** \$40
Africa,	*** \$64	*** \$49
& South	† \$19	† \$13
America		
U.S.A.	*\$31	* \$26
& Canada	** \$46	** \$37
	*** \$57	*** \$44
	† \$16	† \$11
N. Zealand	*\$23	* \$22
	** \$31	** \$30
	*** \$37	*** \$34
	† \$9	† \$7



Tropical Drosera Plants

The following species in the *D. petiolaris*-complex are being offered this season at \$10 each plus postage per order \$6 Australia; \$12 overseas on the following time table.

1: All orders must be placed with payment and received by us before the end of January 2000.

2: All orders will be packaged February 2000 (when they are in active growth) and sent at this time. At other times (outside of this delivery programme) please inquire about species availability.

3: In case of a requested species being sold out, please list substitutes.

Available this season are.....

Drosera broomensis Lowrie
Drosera caduca Lowrie
Drosera dilatato-petiolearis Kondo
Drosera falconeri Kondo & Tsang
Drosera fulva Planchon
Drosera lanata Kondo
Drosera ordensis A. Lowrie
Drosera petiolearis R. Br.

Cephalotus follicularis

"Hard grown" cultivated plants of the
 "Albany Pitcher Plant"

Cephalotus follicularis

approx. 3-4 cm diameter.

We are offering these
 in groups of 4, bare root,
 packaged and airmail
 posted anywhere
 in Australia for \$36,
 overseas \$42.

Drosera ordensis

Cephalotus follicularis

Utricularia paulineae Lowrie

Plant sections are available of this newly
 described species for \$10 per plant starter
 section plus airmail postage/handling.
 \$6 Australia, \$12 overseas

Utricularia paulineae

Drosera falconeri

Drosera petiolearis

Orchids

We can supply a few species of Australian terrestrial orchids as dormant tubers.

We can also supply seed of Australian terrestrial and epiphytic orchids as well as seed of a
 selection of overseas terrestrial orchids.

Stylidium (Triggerplants)

Stylidium species are available as seed packs. A good number of species available.

Customers who are interested in orchids and/or triggerplants will be sent a separate price list
 with the availability of these items, on request. Please forward a self stamped addressed
 envelope-Australia, 3 postal reply coupons-overseas to cover mailing cost.

Seed: \$3 per pack plus postage per order, \$6 Aust; Overseas \$12.

Seed is available at all times throughout the year. The following seed list is constantly changing throughout the year. If you wish to have an updated list at anytime throughout 1999-2000, send 90 cent self stamped addressed envelope [Australia] or (3) postal reply coupons [overseas] and the latest seed list will be forwarded to you promptly. An updated seed list is automatically sent at no extra charge with each new order in 1999-2000.

Drosera

- D admirabilis
- D affinis
- D alba
- D alidae Cape of Good Hope, South Africa
- D alidae "Dwarf form"
- D androsacea Corriagh, W.A.
- D androsacea Dragon Rocks, W.A.
- D anglica La Rippe, Switzerland
- D anglica Logatec 500m, Slovenia
- D anglica near Turcaniske Teplice, western Slovak Republic
- D anglica near Ceske Budejovice, southern Bohemia, Czech Republic
- D anglica Raksa, Turelanska Kollina, Slovakia
- D arcturi Burn Hut Track, Taranui Ranges, N.Z. Alt. 720m
- D arcturi Mt Ruapehu, New Zealand
- D arcturi Turca, Mt. Ruapehu, N.Z. Alt. 1500m
- D arcturi Waihoonu, Desert Road, N.Z. Alt. 1180m
- D arcturi Bruce Road, Whakapapa, Mt Ruapehu, N.Z. 1440m
- D ascendens
- D ascendens "type" Diamantina, Minas Gerais state, Brazil
- D ascendens Serra da Araponga, Minas Gerais state, Brazil
- D ascendens Serra de Aragatuba, Parana state, Brazil
- D ascendens "nairy form" Picado Ilambe, Minas Gerais state X "glabrous form" Rio verde, São Paulo state, Brazil
- D auriculata New Zealand
- D auriculata N.S.W.
- D auriculata Anipara, New Zealand
- D auriculata Lake Ohio, New Zealand
- D bicolor Fitzgerald, W.A.
- D binata "T"-form, red plants, Waihoonu, Desert Road, N.Z. Alt. 1080m
- D binata Hauraki Gulf region, New Zealand
- D binata "all red form" Okaki Forks, New Zealand
- D binata Lake Ohia, New Zealand
- D binata Tongatiro, New Zealand
- D binata Waipoua Forest, New Zealand
- D binata Coromandel Ranges, New Zealand
- D binata var. dichotoma
- D brevifolia "white flower" Rt 375 Wakulla Co., Florida
- D broomensis Lake Campon, Broome, Western Australia
- D broomensis Taylor's Lagoon, Broome, Western Australia
- D bulbosa subsp. bulbosa "narrow leaf, red mid-veins and margin" Worgan Hills, W.A.
- D burkeana South Africa
- D burkeana Johannesburg, South Africa
- D burmanni "red plant to 2 cm Ø" Lake Argyle, Kimberley, Western Australia
- D burmanni "plant green leaved with red glands to 2.5 cm Ø" west of Kununurra, Kimberley, Western Australia
- D burmanni "plants very red to 3.5 cm Ø" Humpty Doo, Northern Territory, Australia
- D burmanni "plant green leaved with red glands to 3 cm Ø" Beerwah, Queensland, Australia
- D burmanni "large, robust plant" N.S.W. Australia
- D burmanni "all green plant, white flower" N.S.W.
- D burmanni Wren Creek, Kimberley
- D caduca "pink flower" Mount Elizabeth, Kimberley
- D caduca "white flower"
- D caledonica
- D callisto "white sand growing form" Brookton, W.A.
- D capensis Gibeig, South Africa
- D capensis "merry-go-round"
- D capensis "narrow leaf" Gibeig, South Africa
- D capensis "red plant"
- D capensis var. alba "white flowers"
- D capensis "typical form, pink flowers"
- D capensis "minor form" found above the snowline, South Africa
- D capensis "plant all green, flowers white"
- D capensis "Giant, to 20 cm diam., white flower"
- D capillaris var. "long leaf" Chapada Diamantina, Bahia state, Brazil
- D capillaris north of Hernando Co., line US Hwy 50, Florida
- D capillaris Lutz Lake Fern road, Hillsborough Co., Florida
- D capillaris "long arm" Van Dyke road, Tampa, Florida
- D capillaris Mongaguá, São Paulo state, Brazil
- D capillaris "plant red in sunlight" Golden Acres Pond, Pascoe Co., Florida
- D capillaris "plant says green in sun with red glands" Rt 65/Rt375 Florida
- D capillaris "typical form" Rt 375/65 Liberty Co., Florida
- D capillaris "robust form, large plants" Trail off US52 Florida
- D capillaris "leaves can be very long" Lutz Lake, Hillsborough Co., Florida
- D capillaris Golden Acres Pond, Pasco Co., Florida
- D capillaris Hicks Pond, Pasco Co., Florida
- D capillaris "leaves and glands red, flower very dark-pink" Charlotte Co., Florida

D. capillaris "white flower, semi-long leaf" Northcliff, Hernando Co., Florida
D. capillaris "robust grower" Hillsboro Co., Florida
D. capillaris "with *D. capillaris* X *D. brevifolia* RT 375, Appalachicola, Florida
D. capillaris X *D. brevifolia* RT 375, Appalachicola, Florida
D. cistiflora "white flower" Darling, South Africa
D. cistiflora "pink flower, plant to 49 cm tall" Clanwilliam, South Africa
D. cistiflora "pink flower" Gibeig, South Africa
D. cistiflora "pink flower" Darling, South Africa
D. cistiflora "dark-pink flower" Darling-Malmesbury, South Africa
D. cistiflora "shades of pink through to white" Cape region South Africa
D. cistiflora [Red flower] "Hopfield, South Africa"
D. cistiflora [Red flower] "Darling, South Africa"
D. collinsiae "Fayland"
D. colombiana "P. Mirante, Chacada dos Guimarães, Mato Grosso state, Brazil
D. communis "robust wine-red roses, lilac flower" Jacaraci, Bahia state, Brazil
D. communis "Boutatu", São Paulo state, Brazil
D. communis "robust scapes, white flowers" Amorimópolis, Goiás state, Brazil
D. communis "white to light lilac flower" Mineiros, Goiás state, Brazil
D. cuneifolia
D. derbyensis Prison Tree, Derby, W.A.
D. derbyensis Beverley Springs, Kimberley, W.A.
D. dielsiana
D. dielsiana X *D. species* "Magaliesberg" Transvaal Province
D. ericksoniae "all red plants, pink flower" Eneabba, W.A.
D. ericksoniae "pink flower" Eneabba, W.A.
D. erythrogyna Bakers Junction, W.A.
D. erythrorhiza subsp. *magna* Cataby, W.A.
D. esmeraldae
D. esmeraldae (?) Serra do Aracá, north Brazil
D. esterhuysenae South Africa
D. falconeri
D. filiformis var. *filiformis* near St. Helena, North Carolina, U.S.A.
D. filiformis forma *filiformis* Wharton, Atlantic Co., N. J.
D. filiformis forma *filiformis* Bass River, Lake Absagui, Burlington Co., N. J.
D. filiformis forma *filiformis* near Batsjo, Wharton pine barrens, New Jersey
D. filiformis var. *tracyi*
D. limbrata
D. luva Howard River, N.T.
D. gigantea "gold-green plant" Bannister, W.A.
D. gigantea "gold-green plant" Cataby, W.A.
D. gigantea "gold-green plant" Rocky Creek, W.A.
D. gigantea Blbbulmun Track, S.E. of Perth, W.A.

D. gigantea "reddish plants" Busselton, W.A.
D. gigantea "reddish plants" Rocky Creek, W.A.
D. gigantea subsp. *genuiculata* "TYPE"
D. glanduligera The Lakes, W.A.
D. glanduligera Cataby, W.A.
D. glanduligera Morawa, W.A.
D. graminifolia subsp. *nortensis* Itacambira, Brazil
D. graminifolia subsp. *nortensis* Grão Mogol, Minas Gerais, Brazil
D. graminifolia "spiralis" Diamantina, M. Gerais state, Brazil
D. graminifolia "spiralis" Pedra Menina, M. Gerais state, Brazil
D. graminifolia "Giant" Itacambira, M. Gerais state, Brazil
D. graniticola
D. heterophylla Gidgegannup, W.A.
D. heterophylla Miling, W.A.
D. hirtella "Serra do Cipó, central Minas Gerais state, Brazil"
D. hirtella var. *hirtella* Diamantina, M. Gerais, Brazil
D. hirtella var. *hirtella* Itacambira, M. Gerais, Brazil
D. hirtella var. *hirtella* Veredas, Minas Gerais state, Brazil
D. hirtella var. *hirtella* Chapada dos Veadeiros, Goiás state, Brazil
D. hirtella var. *lutescens* Serra Dourada, Goiás state, Brazil
D. hirtella var. *lutescens* Mineiros, Goiás state, Brazil
D. hirtella var. *lutescens* Sacramento, Minas Gerais state, Brazil
D. huegelli Beaufort, W.A.
D. indica "pink flower" Goa, India
D. indica "robust plant (catching butterflies), leaf green, glands red, to 30 cm tall, flowers pink" west of Filroy Crossing, Kimberley, Australia
D. indica "sticky robust green plant to 20 cm tall, flowers pink 1 cm, multi-flowered" north of Katherine, Northern Territory, Australia
D. indica "robust green plant to 30 cm tall, flowers pink" Lake Argyle, Kimberley, Australia
D. indica "robust green plant to 45 cm tall, flowers deep reddish-peach" Noonamah, Northern Territory, Australia
D. indica "giant green plant to 50 cm tall, flowers pink 1.5 cm" west of Kununurra, Kimberley, Australia
D. indica "plant green to 30 cm tall, flowers cerise with red centres, stamens red" Taylor's Lagoon, Kimberley, Australia
D. indica "plant green to 30 cm tall, flowers cerise 2 cm Ø, stamens yellow" Cave Spring, Kimberley, Australia
D. indica "plant green to 30 cm tall, flowers cerise, stamens-cerise-cobra-like" north of Halls Creek, Kimberley, Australia
D. indica "plant green to 30 cm tall, flowers cerise 2 cm, stamens cerise-cobra-like" west of Kununurra, Kimberley, Australia
D. indica "plant green to 30 cm tall, flowers cerise" Howard River, Northern Territory, Australia
D. indica "plant green to 20 cm tall, flowers cerise" Noonamah, Northern Territory, Australia

D indica "plant green, to 20 cm tall, flowers pink" Humpty Doo, Northern Territory, Australia
 D indica "plant red, to 20 cm tall, flowers dark pink" Taylors Lagoon, Kimberley, Australia
 D indica "fine red plant, to 30 cm tall, flowers white 1 cm Ø" Palmerston, Northern Territory, Australia
 D indica "pygmy plant green with red glands, to 18 cm tall, flowers pink 1 cm Ø" Bellamack, Northern Territory, Australia
 D indica "pygmy plant green with red glands, to 10 cm tall, flowers white 1 cm Ø" Bellamack, Northern Territory, Australia
 D indica "pygmy red plants, to 5 cm tall, flowers pink 1 cm Ø" west of Kununurra, Kimberley, Australia
 D indica "pygmy red plants, 1–3 cm tall, flowers dark pink 6–10 mm Ø" Taylors Lagoon, Kimberley, Australia
 D indica "pygmy gold-green plant, white flower" Darwin, N.T.
 D indica "reddish plant, pale pink flower" Deep Creek, Kimberley
 D indica "large erect gold-green plant, pink flower" Darwin, N.T.
 D indica "robust green plant, pink flower" Taylor's Lagoon, Kimberley
 D indica "large red plant, pink flower" Taylor's Lagoon, Kimberley
 D indica "large red plant, orange flower" Barnett Station, Kimberley
 D indica "green plant, cerise flower" north of Derby, Kimberley
 D indica "robust plant, leaves densely glandular with maroon stripes" flower pale pink with large blood red hooded cobra-like stamens" Barnett Station, Kimberley
 D indica "giant green plants to 60 cm tall with large 3.5 cm Ø pink flowers" Moonlight Stock Yard, E of Drysdale River, Kimberley
 D indica "giant green plants to 60 cm tall with large 3.5 cm Ø pink flowers" swampland, E of Drysdale River, Kimberley
 D indica "densely glandular plant, white flower, giant red stamens" Gibb River, Kimberley
 D indica "white flower" Tsukuba, Tokyo area, Japan
 D indica "robust green plant, pink flower, cold tolerant" Mount Augustus, W.A.
 D intermedia Pirinda, Ces. Les. W. Bohemia
 D intermedia Lake of Pratignano, Modena, Italy
 D intermedia Laubjansko Barje 290 m, Slovenia
 D intermedia Gran Sabanna, Venezuela
 D intermedia "all red plants" Gutenberg, Brandenburg, Germany
 D intermedia Canada
 D intermedia Suwanee Canal, floating islands, Okefenokee Swamp, Charlton Co., GA
 D intermedia Bass River, Lake Absecon, Burlington Co., N. J.
 D intermedia near Cironelle, Washington Co., Alabama
 D intermedia Wharton, Atlantic Co., N. J.
 D intermedia "large form, no dormancy" Pasco Co., Florida
 D intermedia "tropical"
 D intermedia New Jersey pine barrens
 D intermedia Washington Co., Alabama
 D intermedia Bagno Rakowskie, eastern Poland

D intermedia "carolina giant" U.S.A.
 D intermedia near Veseli nad Lužnicí, 420 m, southern Bohemia, Czech Republic.
 D intermedia Hinchieslea Bog, New Forest, U.K.
 D intermedia "Robust form" Hinchieslea Bog, New Forest, U.K.
 D intermedia White Moor, New Forest, U.K.
 D intermedia Hachel Pond, New Forest, U.K.
 D intermedia var rosalmae
 D jacoby
 D kalteurensis
 D kennedyi Mitchell Plateau, Kimberley
 D lanata type form, north Queensland
 D lanata Darwin, N.T.
 D leucoblasta Gibson, W.A.
 D leucoblasta Brookton, W.A.
 D linearis "type" near Tobermory, Bruce County, Ontario
 D linearis "giant" near Oliphant, Bruce County, Ontario
 D lowriei "plants 1.5 cm Ø gold/green with maroon red mid vein, margins and scape" Hyden, W.A.
 D lowriei "plants 2.5 cm Ø deep maroon" Fitzgerald, W.A.
 D lowriei "plants 2 cm Ø red-maroon" S.E. of Hyden, W.A.
 D lowriei "plants 4.5 cm Ø gold/green with maroon red mid vein, margins and scape" Ravenshorpe, W.A.
 D macrantha "white flower" Cranbrook, W.A.
 D macrantha "desert form to 1 metre tall, clump forming, pink flowers" Cue, W.A.
 D macrantha "juvenile plants roseated to 3 cm Ø with additional tuber forming stolons from centre and below" Wongan Hills, W.A.
 D macrantha Ravenshorpe, W.A.
 D aff. macrantha "inflorescence only hirsute, remainder of plant glabrous" NE of Eneabba, W.A.
 D macrantha subsp. eremaea Mount Magnet, W.A.
 D macrantha subsp. planchonii South Australia
 D macrophylla subsp. macrophylla "5-6 flowers per scape" Wongan Hills, W.A.
 D macrophylla subsp. macrophylla "6-8 flowers per scape" Milng, W.A.
 D macrophylla subsp. macrophylla "1-3 flowers per scape" Mawson, W.A.
 D macrophylla subsp. montanina Bruce Rock, W.A.
 D madagascariensis "short stem, large green leaves" near Pretoria, South Africa
 D madagascariensis "Magalesberg, Traansval, South Africa"
 D madagascariensis var. major near Pretoria, South Africa
 D menziesii subsp. menziesii "red plant, short and erect" Calaby, W.A.
 D menziesii subsp. menziesii NE of Eneabba, W.A.
 D microscapa south coast, W.A.
 D miniata Gidgegannup, W.A.
 D montana var. montana Serra do Caparaó, Minas Gerais state, Brazil
 D montana var. montana Serra dos Pirineus, Goiás state, Brazil

D montana Serra da Lanastia, Brazil
 D montana var. montana Grao Mogol, MG, Brazil
 D montana var. montana Ibitipoca, MG, Brazil
 D montana var. montana Itambé Peak, MG, Brazil
 D montana var. montana Serra do Cipó, Minas Gerais state, Brazil
 D montana var. montana Brasília, Goiás state, Brazil
 D montana var. schwackei Diamantina, M. Gerais, Brazil
 D montana var. toritosa "slightly hairy" Pedra Menina, M. Gerais, Brazil
 D montana var. toritosa Serra da Canastra, Minas Gerais state, Brazil
 D montana var. toritosa Ouro Preto, Minas Gerais state, Brazil
 D montana var. toritosa Mucuge, BA, Brazil
 D montana var. toritosa "Itacambira, northern Minas Gerais state, Brazil"
 D myriantha Karridale, W.A.
 D neesii subsp. borealis "short robust plants to 20 cm tall" N of Geraldton, W.A.
 D nitidula subsp. nitidula Bibbimun Track, S.E. of Perth, W.A.
 D nitidula subsp. nitidula "beautiful miniature compact plants" Cape Le Grand, W.A.
 D nitidula subsp. nitidula "beautiful miniature compact plants" Gibson, W.A.
 D nitidula subsp. nitidula Bullsbrook, W.A.
 D nitidula subsp. nitidula Bennister, W.A.
 D nitidula subsp. telcostigma Catby, W.A.
 D nitidula subsp. omisssa Morley, W.A.
 D nitidula subsp. omisssa The Lakes, W.A.
 D nivea Marchagee, W.A.
 D oblanceolata Hong Kong
 D occidentalis subsp. occidentalis Bullsbrook, W.A.
 D occidentalis subsp. australis "long scapes, flowers white" Cape Le Grand, W.A.
 D occidentalis subsp. australis "Warriup form, salmon-pink flowers" Warriup, W.A.
 D occidentalis subsp. australis Condungup, W.A.
 D ordensis Mulligan Lagoon, Kimberley
 D ordensis Boab Springs, Kimberley
 D ordensis Wyndham, W.A.
 D ordensis "small form" Kimberley
 D ordensis Lake Argyle, Kimberley
 D ordensis Lowrie Beverley Springs Kimberley
 D pallida Albany, W.A.
 D pallida Marbellup, W.A.
 D pallida Willyung, W.A.
 D paradoxa "pink flower" Drysdale River, Kimberley
 D aff. paradoxa "metallic orange flower" Mount Elizabeth, Kimberley
 D aff. paradoxa "metallic orange flower" Charnley River, Kimberley, W.A.
 D pauciflora "pink flower" Darling, South Africa
 D pauciflora "pink flower" Malmesbury, South Africa
 D pauciflora "yellow flower"

D pellata N.S.W.
 D pellata "W.A. form" Madden, W.A.
 D pellata Kaimaumau, New Zealand
 D platypoda Willyung, W.A.
 D playsigma King River, W.A.
 D praefolia Onkaparinga, S.A.
 D puchella "white flower"
 D puchella "pink flower"
 D puchella "flower orange with maroon centre" Karridale, W.A.
 D psychoblasta "inland form, small white flowers" Varley, W.A.
 D pygmaea Bribie Island, Queensland
 D pygmaea Victoria
 D pygmaea "Western Australian form" Karridale, W.A.
 D radicans N of Geraldton, W.A.
 D rosalmae Gran Sabana, Venezuela
 D rosalmae subsp. "Mount Nebina" Mount Nebina, Amazonas, Brazil
 D rosalmae (?) Serra do Araca, north Brazil
 D roundifolia "small form to 4 cm Ø" Muranska Planina, Slovak Republic
 D roundifolia Luby near Cheb, W. Bohemia, near German border
 D roundifolia Bloomsburg County, PA, U.S.A.
 D roundifolia Mendocino County, U.S.A.
 D roundifolia Grey Lake, Lyn Llydaw, Snowdonia, Wales
 D roundifolia Lyn Llanberis Pass, Snowdonia, Wales
 D roundifolia Lyn Padurn, Wales
 D roundifolia Inailly Luh, SE Poland
 D roundifolia Wharton, Atlantic Co., N.J.
 D roundifolia "very red plants" Springer Lake, Thurston Co., Washington, U.S.A.
 D roundifolia Truslová near Turi, Teplice, Slovak Republic
 D roundifolia near Turčianske Teplice, Slovak Republic
 D roundifolia Sucha Hora peat bog, 750 m, Orava, northern Slovak Republic
 D roundifolia near Turčianske Teplice, Czech Republic
 D roundifolia Lesná u Tachova, southern Bohemia, Czech Republic
 D roundifolia Máchovo Jezero, northern Bohemia, Czech Republic
 D roundifolia White Moor, New Forest, U.K.
 D roundifolia Hachet Pond, New Forest, U.K.
 D roundifolia Hinchesea Bog, New Forest, U.K.
 D salina "type" Chidrup, W.A.
 D salina "large robust form" Pngrup, W.A.
 D sessilifolia Chapada dos Guimaraes, Mato Grosso, Brazil
 D stickii South Africa
 D spatulata "plants to 4.5 cm Ø, flowers dark pink" Beerwah, Queensland, Australia
 D spatulata Buried Forest, Pureora, New Zealand
 D spatulata Ahipara, New Zealand
 D spatulata Mount Ruapehu, New Zealand

D spatulata Naruto Town, Chiba Prefecture, Kanto district, Japan
 D spatulata Ube City, Yamaguchi Prefecture, Chugoku district, Honshu, Japan
 D spatulata "pink flower" Shin-chaya Mrie, Kawanami T, Miyazaki Prefecture, Kyushu, Japan
 D spatulata "Kanto form" Kanto district, Japan
 D spatulata Nanjo Town, Chiba Prefecture, Kanto district, Japan
 D spatulata "hairy sepals and peduncle, purple flower" Gympie, Queensland, Australia
 D spatulata Jamberoo Mountains, Australia
 D spatulata "plants green with red tinge, 15-20 mm diam." Lake Oamangakau, N.Z. Alt. 611m
 D spatulata "all red alpine form, plants 15 mm diam." Waihoonu, Desert Road, N.Z. Alt. 1080m
 D spatulata "dark red alpine plants, 15 mm diam." Turoa, Mt. Ruapehu, N.Z. Alt. 1500m
 D spatulata "all red alpine forms mixed, uni-flowered forms, plants 15 mm diam. & multi-flowered forms, plants 20 mm diam." Whakapapa, Mt. Ruapehu, N.Z. Alt. 1120m
 D spatulata "glan plant to 5.5 cm o, pink flower" Mt Paluma, Nth Qld
 D spatulata Hong Kong
 D spatulata Cairns, north Queensland
 D spatulata "small red alpine form" Mt Ruapehu, New Zealand
 D spatulata "rotund leaves"
 D spatulata var. loveliae
 D species "forked scape" South America
 D species "Corumba" Serra dos Pirineus, Goiás state, Brazil
 D species Magaliesburg, Transvaal, South Africa
 D species "white hirtella" Brasília, Goiás state, Brazil
 D species "white hirtella" Brasília, Goiás state, Brazil
 D species "Auyun Tepur"
 D species "10-erect" South Africa
 D species "stemless chrysolepis" Serra do Cipó, Minas Gerais state, Brazil
 D species "Ernas" Sengés, Paraná state, Brazil
 D species "Ernas" Itacambira, Minas Gerais state, Brazil
 D species "pretty rosette" South Africa
 D species "PV 860" Stronsveikloot, 150 km east of Cape Town, South Africa
 D species "colombiana" Chapada dos Guimarães, Mato Grosso, Brazil
 D species "Malawi"
 D species "Rhodesia"
 D species Eagle Hill, W.A.
 D stenopetala Tararua Ranges, New Zealand
 D stenopetala Burn Hut Track, Tararua Ranges, N.Z. Alt. 720m
 D stolonifera subsp. compacta Cranbrook, W.A.
 D stolonifera subsp. compacta Katching, W.A.
 D stolonifera subsp. compacta Kendenup, W.A.
 D stolonifera subsp. porrecta Marchages, W.A.
 D stolonifera subsp. porrecta Cataby, W.A.

D stolonifera subsp. prostrata
 D stolonifera subsp. rupicola (golden green plant)
 D stolonifera subsp. rupicola "Bronze plants" East Hyden, W.A.
 D stolonifera "South Coast form Shellys, W.A.
 D stictocaulis Mount Lesueur, W.A.
 D subhirtella Morawa, W.A.
 D subhirtella Miling, W.A.
 D subilis Kimberley, W.A.
 D trinervia "pink flower" Clanwilliam, South Africa
 D trinervia "pale-pink flower" Giberg, South Africa
 D trinervia "white flower" Giberg, South Africa
 D venusta
 D vilcosa Itatiaia Peak, S.P. Brazil
 D vilcosa subsp. "Bahia" Catalães, Bahia state, Brazil
 D vilcosa "lambé" Itambé Peak, Minas Gerais, Brazil
 D whittakeri subsp. whittakeri Goolwa, S.A.
 D whittakeri subsp. whittakeri Tohills, S.A.
 D whittakeri subsp. aberrans Fairview, S.A.
 D zigzagia Lowrie = D. subhirtella subsp. moorei "erect zigzag plants"
 D zigzagia Lowrie = D. subhirtella subsp. moorei "erect zigzag plants" Hurstone, W.A.
Drosophyllum
 D lusitanicum
Utricularia
 U alpina
 U amethystina "purple & white flower" Furnas, Minas Gerais state, Brazil
 U amethystina Furnas Dam, MG, Brazil
 U amethystina Caraca, MG, Brazil
 U amethystina "purple flower" Congonhas do Norte, Minas Gerais state, Brazil
 U amethystina "Light-purple flower" Chapada dos Guimarães, Mato Grosso, Brazil
 U arenaria
 U benthamii Merivale, W.A.
 U benthamii Beaufort, W.A.
 U bisquamata
 U bisquamata "cream-yellow flower" near Pretoria, South Africa
 U bisquamata "large flower" Betty's Bay, R.S.A.
 U blancheti "white flower" Mucuge, BA, Brazil
 U capilliflora Humpty Doo, Northern Territory, Australia
 U chrysantha "flowers deeply 4-lobed, yellow, palate dark yellow, outer a little reddish" west of Kunthra, Kimberley, Australia
 U chrysantha "flowers yellow, palate orange, outer brick-red" Berry Springs, Northern Territory, Australia
 U chrysantha "flowers yellow, palate orange, outer brick-red" Charlotte River, Northern

Territory, Australia
Uchrysanthia "flowers yellow, palate dark yellow, outer dark yellow" Lake Argyle, Kimberley, Australia
Uchrysanthia "flowers yellow, palate orange, outer brick-red" Noonamah, Northern Territory, Australia
Uchrysanthia Drysdale River, Kimberley
Uchrysanthia "all yellow flower" Mount Elizabeth, Kimberley
Uchrysanthia Cape Bougainville, Kimberley, W.A. (helicopter collection)
Ucornuta "seed mix of different cones"
Udelicatula Ahpara, New Zealand
Udelicatula Lake Ohia, New Zealand
Udichotoma South Australia
Udichotoma Esperance, W.A.
Udichotoma "affixed aequates, scapes up to 40 cm long" Merivale, W.A.
Udunstaniae Humpty Doo, Northern Territory, Australia
Udunstaniae "taller, finer smaller flowered species" King Edward River, W.A. Kimberley
Uerecitoria Kavanayén, Gran Sabana, Venezuela
Uerecitoria Mineiros, Goiás state, Brazil
Ulimula "deep purple almost black flower with orange-yellow blotch at base of lower lip" near Pretoria, South Africa
Uilacida Mucugé, Bahia, Brazil
Uioveolata "twining inflorescence, blue flowers" Merten's Creek, Kimberley, W.A.
Uigeorge "3-lobed white flowers" Little Merten's Falls, Kimberley, W.A.
Uhamiltonii Noonamah, Northern Territory, Australia
Uhelix Cape Le Grand, W. A.
Uhispidia Serra da Canastra, Minas Gerais state, Brazil
Uhispidia Serra do Calapó, Goiás state, Brazil
Uhispidia Serra dos Pirineus, Goiás state, Brazil
Uhispidia Caminho do Mar, S. P. Brazil
Uhuntii Serra Dourada, Goiás state, Brazil
Ujuncosa central north Florida, U.S.A.
Ujuncosa Oklawaha Swamp, GA
U. cf. juncosa Burlington Co., N. J.
Ukamienski Humpty Doo, Northern Territory, Australia
Ukimbeyensis Palmerston, N.T.
Ulasocaulis "large pale-mauve flower" Noonamah, N.T.
Ulasocaulis [Type] "Noonamah, N.T."
Ulasocaulis "deeply 3-lobed lower lip" Grevillea Creek, Beverley Springs
Ulasocaulis "large violet flowers, palate ridges yellow, outer surface burnt-orange" Grevillea Creek, Kimberley
Ulateriflora Blackheath, NSW, Australia
Ulixa
Uleptoplectra "plant to 60 cm tall, flowers violet to 2 cm Ø, palate white, outer golden yellow" Humpty Doo, Northern Territory, Australia
Uleptoplectra "plant to 60 cm tall, flowers mauve to 2 cm Ø, palate & surroundings white, outer whiter" Girraween Lagoon, Northern Territory, Australia
Uleptoplectra "plant to 30 cm tall, flowers violet to 1 cm Ø, palate white, outer golden yellow" Chairote River, Northern Territory, Australia
Uleptoplectra "pale mauve flower" Darwin, N.T.
Uleptoplectra "outer corolla surface white" Koodjinyah, N.T.
Ulimosa "blue flower" Mount Elizabeth, Kimberley
Ulimosa "blue flower" north of Honeymoon Beach, Kimberley
Ulimosa "mauve flower" King Edward River crossing, Kimberley, W.A.
Ulimosa "pale-avender flower" Merten's Creek, Kimberley, W.A.
Ulimosa "white flower" Yarrowonga, N.T.
Ulimosa "flowers white" Howard River, Northern Territory, Australia
Ulimosa "dusky blue flowers, scapes floating buoy-like" Grevillea Creek, Kimberley
Ulimosa "Mauve with a white palate" Beverley Springs
Ulivida "blue & white flower" Durbun, South Africa
Ulongigolia "variant"
Ulongigolia "white flowers" Serra da Araponga, M.G. Brazil
Ulongigolia "multi-flowered scapes" Serra da Araponga, M.G. Brazil
Ulongigolia Orzavado, Rio de Janeiro, Brazil
Umenziesii "flowers red with yellow palates" Albany, W.A.
Umonanthos Queensland, Tasmania
Umonanthos "violet flower" Tyndall Ranges, Tasmania
Unegrescens Mineiros, Goiás state, Brazil
Uodorata Darwin, N.T.
Uodorata "yellow flower, palate bearing fine black lines" Litchfield N.T.
Uodorata Girraween, N.T.
Uodorata Humpty Doo, Northern Territory, Australia
Uoparthnoppes Mucugé, BA, Brazil
Upaineae Lowrie = *U. species* "violet flowers" south coast, W.A.
Upraelonga
Upusilla Serra Dourada, Goiás state, Brazil
Upusilla Serra do Cipó, Minas Gerais state, Brazil
Ureniformis "small form, long curved spur"
Ureniformis "large form, inflorescence to 1 m tall, flowers 5 cm o"
Ureticulata Goa, India
Usimplex "some 2 flowered forms" Karidale, W.A.
Uspecies "described as *U. submissilis* Colenso but placed under *U. novae-zealandiae* by Taylor; flowers bluer than *U. novae-zealandiae* from Lake Ohia New Zealand"
Uspecies Kunurra "scapes 2–6 flowered, flowers pale mauve 2.5 mm wide, 5 mm long, palate domed white with 2 orange marks" east of Kunurra, Kimberley, Australia
Uspecies "small yellow flower, long scapes" Chapada dos Guimaraes, MT, Brazil
Uspecies "Taylor 17003" S.E. of Perth, W.A.
Utridentata El Pinar, Uruguay
Utridentata Brazil

- U. triflora, Girraween, N.T.
 U. uliginosa
 U. uliginosa "blue multi-flowered inflorescences" Beerwah, Queensland
 U. violacea "miniature plants to 2 cm tall" Bulbrook, W.A.
 U. violacea "small plants" N.E. of Eneabba, W.A.
 U. violacea "type, violet flower" Cape Le Grand, W.A.
 U. violacea "type, violet flower" The lakes, W.A.
 U. violacea "violet flower, lower lip entire" Cape Le Grand, W.A.
 U. violacea "very pale mauve flower" Cape Le Grand, W.A.
 U. violacea "mauve flower" Merivale, W.A.
 U. violacea "cuisse flower" Merivale, W.A.
 U. violacea "violet flower, lower lip slightly 3-lobed" Merivale, W.A.
 U. volubilis Cape Le Grand, W.A.
 U. volubilis Merivale, W.A.
Polypompholyx
 P. multifida Denmark, W.A.
 P. multifida "giant plants to 30 cm tall, many scapes each 5-7 very pale pink flowered" Little Grove, W.A.
 P. multifida "giant plants to 30 cm tall, many scapes each 5-7 very pale pink flowered" Little Grove, W.A.
 P. tenella "large white flower" Fitzgerald, W.A.
Genlisea
 G. aurea "Itacambira, northern Minas Gerais state, Brazil"
 G. filiformis Serra da Canastra, Minas Gerais state, Brazil
 G. filiformis Serra das Pirineus, Goiás state, Brazil
 G. filiformis Chapada dos Guimarães, southern Mato Grosso state, Brazil
 G. filiformis Chapada dos Veadeiros, GO, Brazil
 G. filiformis Diamantina, Minas Gerais state, Brazil
 G. guianensis Gran Sabana, Venezuela
 G. hispida
 G. repens Itacambira, M. Gerais, Brazil
 G. repens Serra da Canastra, Minas Gerais state, Brazil
 G. species "giant violacea" Itacambira, M. Gerais, Brazil
 G. species "Itacambira beauty" Itacambira, M. Gerais, Brazil
 G. violacea Furnas, Minas Gerais state, Brazil
 G. violacea "Giant" Itambe Peak, MG, Brazil
 G. violacea Diamantina, Minas Gerais state, Brazil
Byblis
 B. aquatica Palmerston, Northern Territory, Australia
 B. aquatica "plants robust, to 50 cm long" Howard River, Northern Territory, Australia
 B. filifolia "Plant to 30 cm tall, flowers mauve, outer surface lemon-yellow", growing with B. torrida, south of Taylor's Lagoon, Kimberley
 B. filifolia "Plant to 30 cm tall, flowers mauve, outer surface lemon-yellow with purple margins" Lake Argyle, Kimberley
- B. filifolia "Plant to 45 cm tall, flowers mauve, outer surface yellow", west of Kununurra
 B. filifolia "Plant to 45 cm tall, flowers mauve, outer surface yellow" north of Taylor's Lagoon margins
 B. filifolia "Plant to 50 cm tall, flowers mauve, outer surface lemon-yellow with purple margins" south east of Kununurra, Kimberley
 B. filifolia "Plant to 50 cm tall, flowers mauve, outer surface yellow" Cave Spring, Kimberley
 B. filifolia "Plant to 1 metre tall, flowers mauve, outer surface lemon-yellow with purple margins" west of Kununurra, Kimberley
 B. filifolia "Plant multi-headed, flowers mauve, outer surface lemon-yellow with purple margins" Cave Spring, Kimberley
 B. filifolia "mauve flower, petal tips serrate, outer surface yellow" north of Taylor's Lagoon, Kimberley
 B. filifolia Gibb River, Kimberley
 B. filifolia "outer flower surface whitish" Honeymoon Beach, Kimberley
 B. filifolia "outer flower surface lemon" Carson River, Kimberley
 B. filifolia north of Derby, Kimberley
 B. filifolia "small plant and flower, outer flower surface striped maroon" Honeymoon Beach, Kimberley
 B. filifolia "Giant plants" Dominic Creek, Kimberley
 B. filifolia "outer surface yellow with maroon stripes" Pearson River, Kimberley, W.A.
 B. filifolia "outer petal surface yellow" Lake Argyle, Kimberley
 B. filifolia south of Big Merian's Falls, Kimberley, W.A. (helicopter collection)
 B. filifolia "giant plants to 50 cm tall" Pago, Kimberley
 B. filifolia "mauve, outer surface lemon-yellow" west of Kununurra, Kimberley
 B. gigantea "Bibbulmun Track" south east of Perth, W.A. excellent robust form
 B. gigantea "northern form, plants to 60 cm tall" Eneabba, W.A.
 B. gigantea "northern form" Arrowsmith River, W.A.
 B. filifolia Palmerston, Northern Territory, Australia
 B. torrida "robust plants to 35 cm tall, flowers mauve, outer whitish striped lilac-purple" east of Broome, Kimberley
 B. torrida "fine plants to 30 cm tall, flowers mauve, outer whitish" south of Taylor's Lagoon, Kimberley
Dioneaea
 D. muscipula
 D. muscipula var. "Akai Ryu" beautiful dark red-maroon trap interiors with remainder of plant maroon
 D. muscipula "dentate teeth on traps"
 D. muscipula "Green Dragon"
 D. muscipula "Red Dragon"
 D. muscipula "all green plant"
Nepenthes
 N. alomagnatha "rubra" Penang Hill, 800 m, Malaysia
 N. ampullaria "spotted" Singapore
 N. ampullaria Johore, Malaysia
 N. gracilis rubra "Jahore, Malaysia

- N. javicola G. Telong, 2000 m Sumatra
 N. mactariensis Malaysia
 N. mactariensis Gunung Ulu Kali, 1600 m, Malaysia
 N. mirabilis "Large green & pink (some almost deep red) pitchers to 20 cm long" Inistail, Queensland, Australia
 N. mirabilis Castle Peak Fire Range, Hong Kong
 N. mirabilis Macau, China
 N. x mixta X maxima
 N. rafflesiana "giant" Singapore
 N. rafflesiana x N. sanguinea Genting Highlands 1800 m
 N. spatulata X N. kempotiana
 N. spatulata "UCB" X N. kempotiana "UW"
 N. stenophylla Boreo, 1000m, Sarawak
 N. ventricosa
 N. villardii Mount Koghi, New Caledonia
 N. villardii Riviere Bleue, New Caledonia
- Pinguicula**
 P. acuminata
 P. agnata "scented flower"
 P. agnata (new subsp. ?) large semi erect wedge-shaped leaves, flowers violet-blue, white throated" El Lobo, Mexico
 P. alpina (?) habitat —waterfalls and dolomite @ 500m, near Laubjiana, Slovenia
 P. alpina near Zilina, Mala Fatra Mountains, Vratna dolina, 900 m, Slovak Republic
 P. alpina Bellianske Tatry Mtns, 1200-1400 m, Slovak Republic
 P. alpina "green plant" Bellianske Tatry Mountains, 1200-1400 m northern Slovak Republic
 P. caerulea Golden Acres Pond, Pasco Co., Florida
 P. caerulea "light mid-blue flower" Golden Acres Pond, Pasco Co., Florida
 P. caerulea Okefenokee swamp, Ware Co., GA
 P. crystallina subsp. hirtiflora Rossano calabro, Italy
 P. cyclosecta "the real thing not P. ehlersae"
 P. ehlersae "stripped throat" Santa Gertruda
 P. ehlersae "clone ex Oxford forest unit tissue culture"
 P. ehlersae "from a very variable population" Sta. Gertrudis
 P. emarginata
 P. emarginata "mixture of flower colours, sizes & veining patterning"
 P. gracilis
 P. grandiflora La Baladosa, Andorra
 P. grandiflora col de la Fautille, Jura, France
 P. grandiflora Mjoux, Jura, France
 P. grandiflora "from a U.K. outdoor bog garden"
 P. grandiflora Knockmaltreynann, Killybeg, Ireland
 P. grandiflora "Savoie" French Alps
 P. grandiflora "Belledonne" French Alps
- P. grandiflora "rosea"
 P. aff. grandiflora "reddish purple flowers, long copper coloured summer leaves (possible P. grandiflora—P. longifolia intergrade)" Rio Ara Ordessa, Spain
 P. grandiflora or P. vulgaris or mixture of both with the possibility of the hybrid between the two—P. X scully (field collected seed) Armagh Slieve, Misch Mountains, Dingle Peninsula, County Kerry, Ireland
 P. grandiflora or P. vulgaris or mixture of both with the possibility of the hybrid between the two—P. X scully (field collected seed) Dingle Way Curraheen, Misch Mountains, Dingle Peninsula, County Kerry, Ireland
 P. grandiflora or P. vulgaris or mixture of both with the possibility of the hybrid between the two—P. X scully (field collected seed) Derryquay River, Misch Mountains, Dingle Peninsula, County Kerry, Ireland
 P. grandiflora or P. vulgaris or mixture of both with the possibility of the hybrid between the two—P. X scully (field collected seed) Connor Pass, Dingle Peninsula, County Kerry, Ireland
 P. grandiflora or P. vulgaris or mixture of both with the possibility of the hybrid between the two—P. X scully (field collected seed) Gap of Dunloe Killybeg National Park, County Kerry, Ireland
 P. grandiflora or P. vulgaris or mixture of both with the possibility of the hybrid between the two—P. X scully (field collected seed) Moils Gap Killybeg National Park, County Kerry, Ireland
 P. grandiflora or P. vulgaris or mixture of both with the possibility of the hybrid between the two—P. X scully (field collected seed) Lady's View Killybeg National Park, County Kerry, Ireland
 P. grandiflora or P. vulgaris or mixture of both with the possibility of the hybrid between the two—P. X scully (field collected seed) Knocknaeyouloo "Ring of Kerry", County Kerry, Ireland
 P. grandiflora or P. vulgaris or mixture of both with the possibility of the hybrid between the two—P. X scully (field collected seed) Dingle Way Curraheen River, Misch Mountains, Dingle Peninsula, County Kerry, Ireland
 P. gypsicola "long lance-like leaves, flowers violet-purple" Santa Gertrudis, Mexico
 P. hirtiflora
 P. hirtiflora by waterfalls, Vjoses river valley, Kalcyre, Albania
 P. ionantha "white flower"
 P. ionantha Liberty Co., Florida
 P. laumavensis
 P. laueana
 P. laueana "flowers a mix of various shades of purple and cerise"
 P. laueana "crimson red flowers"
 P. longifolia subsp. longifolia
 P. longifolia subsp. caussensis Gorge du tarn, France
 P. longifolia subsp. longifolia Val de Ordessa, Spain
 P. lusitanica "very large plants 4-5 cm Ø with lilac to pale lilac flowers" Armagh Slieve, Misch

S. alata "wavy lid"
S. alata "white flower"
S. alata Deer Park, Alabama
[S. alata "red" X *S. flava* "red"] X *S. flava* "red tube" Holley, Florida
[S. alata "pubescent form" X *S. leucophylla* Deer Park, Alabama] X *S. X. popei*
[S. alata X *S. X. courtii* X *S. X. catesbaei* X *S. rubra*] X *S. minor*
[S. alata X *courtii* X *catesbaei* X *rubra*] X *[S. leucophylla* X *willisii* "dark"]
S. X. excellens X *S. leucophylla* "yellow flower"
S. flava "heavy veins" Cooks Bayou, Florida
S. flava "heavy veins" North Carolina
S. flava Dahlia Bog, Virginia
S. flava Lambert County, North Carolina
S. flava Green Swamp, North Carolina
S. flava Columbus Co., North Carolina
S. flava near Munson, Blackwater River, Florida
S. flava Walton Co., Florida
S. flava "red tube" Holley, Florida
S. flava "red tube" clone via England
S. flava "red tube" Florida X *S. flava* "giant red tube" Appalachicola
[S. flava "red tube" X *S. flava* "heavily veined all red hybrid"] X *S. flava* "giant red tube"
 Appalachicola
S. flava "purple tube" Milton X *S. flava* "giant red tube" Appalachicola
S. flava "burgundy" X *S. flava* "giant red tube" Appalachicola
S. flava "red lid, very heavily veined" North Carolina
S. flava "red and green forms, maxima giants"
S. flava "green form"
S. flava "heavily veined" Appalachicola, Florida
S. flava "lightly veined" North Carolina
S. flava "lightly veined giant to 3 ft"
S. flava "mixed, from selected clones" via England
S. flava mixed assortment of veined, green, red throat blotch and all red forms
S. flava var. *ornata*
S. flava var. *rugellii* "lovely large stocky plants very consistent in form" near Sumatra, FL
S. flava var. *rugellii* Sumatra, Florida
S. flava var. *rugellii* "large red patch in throat"
S. flava "all green" X *S. flava* North Carolina
S. flava "copper lid" North Carolina
[S. flava "copper lid" X *S. leucophylla*] X *S. flava* "heavily veined"
S. flava "copper lid" X *S. leucophylla* subsp. *purpurea*
S. flava "heavy veined" X *S. X. catesbaei*
S. X. harperi X *S. X. moorei*
S. leucophylla "mixed, from selected clones" via England
S. leucophylla "mixed forms" Citronelle, Alabama
S. leucophylla "very red forms" Gas station site, Perdido, AL

S. leucophylla "variable population, good variation in size & colouring and especially good white lidded forms" Centrum Fields, AL
S. leucophylla Escambia Co., Florida
S. leucophylla "white top, red veins" Perdido, Alabama
S. leucophylla Pensacola, Florida
S. leucophylla Franklin County, Florida
S. leucophylla Washington County, Alabama
S. leucophylla Milton, Florida
S. leucophylla Perdido, eastern Alabama
S. leucophylla "wide throat, wavy lid, top 1/3 of tube Chalk-white" Santa Rosa Co., Florida
S. leucophylla "mixed clones" Milton, Florida
S. leucophylla Citronelle, Alabama
S. leucophylla "yellow flower" Perdido, Alabama
S. leucophylla "green/white" Chipola, Florida
S. leucophylla Perdido, Alabama
S. leucophylla "pubescent" Deer Park, Alabama
S. leucophylla New Seminola
S. leucophylla north Florida
S. leucophylla Walton Co., Florida
S. leucophylla X *S. alata* "seed from a red plant of a hybrid swarm with particularly white tops-very nice and not at all like the regular cultivated hybrid" Tibbee, AL
[S. leucophylla X *S. X. catesbaei* X *S. X. moorei*
[S. leucophylla X *S. rubra* "pink tube"] X *S. X. moorei*
[S. leucophylla X *S. X. moorei*] X *[S. leucophylla* X *S. X. catesbaei*]
[S. leucophylla X *S. X. popei*] X *S. X. popei*
[S. leucophylla X *S. X. popei*] X *S. X. Brookes hybrid*
S. X. Linda Butt X *S. X. moorei*
S. minor Waycross, Georgia
S. minor North Florida
S. minor south Georgia
S. minor Deland, Florida
S. minor near Fargo, Clinch Co., Georgia
S. minor "Okefenokee giant" Okefenokee Swamp
S. minor "leaf hoods reddish-bronze dark red under" Santa Rosa Co., Florida
[S. X. mitchelliana X *S. leucophylla*] X *S. X. moorei*
S. X. moorei (S. flava X S. leucophylla) from a huge site, entirely hybrids with loads of variation, better than the artificially produced hybrid P - Cota Fields, FL
S. oreophila "5 mixed clones of veined and veinless forms"
S. oreophila clone via U.S.A.
S. oreophila "large Georgia form" X *S. oreophila* Boaz
S. oreophila "mixed selected forms" clones via England
S. oreophila "clone 01" north east Georgia
S. oreophila "clone 02" south Georgia
S. oreophila "clone 03"

S. oreophila "large form" Georgia
S. oreophila "heavily veined" Dekalb County, Alabama
S. psittacina near yellow River, Santa Rosa Co., Florida
S. psittacina "yellow/pink orange flower"
S. psittacina Sumatra, Florida
S. psittacina "reddish green on top with white venation" Santa Rosa Co., Florida
S. psittacina southern Georgia
S. purpurea subsp. *purpurea* "typical form"
S. purpurea subsp. *purpurea* Jersey intergrade
S. purpurea subsp. *purpurea* Erie County, New York
S. purpurea subsp. *purpurea* Carolina Mountain form
S. purpurea subsp. *purpurea* "cultivated clone via U.S.A."
S. purpurea subsp. *purpurea* Manitowoc County, Wisconsin
S. purpurea subsp. *purpurea* "green with red veining"
S. purpurea subsp. *purpurea* "heterophylla" Annapolis Co., Nova Scotia, Canada
S. purpurea subsp. *purpurea* "green mutant"
S. purpurea subsp. *purpurea* forma *heterophylla*
S. purpurea subsp. *venosa* "rare in the wild in central European climate"
S. purpurea subsp. *venosa* "typical form"
S. purpurea subsp. *venosa* "Louis Burke"
S. purpurea subsp. *venosa* var. *burkei* "mixed forms, this site has yielded nice veinless forms in the past" Bay Co., FL
S. purpurea subsp. *purpurea* var. *Louis Burke* Rt 65 Liberty Co., Florida
S. purpurea subsp. *purpurea* "Louis Burke" Appalachicola Area, Florida
S. purpurea subsp. *venosa* "various locations" Florida
S. purpurea subsp. *venosa* "red flower" Chipola
S. purpurea subsp. *venosa* typical form + some chipola and burkei varieties
S. rubra subsp. *rubra* clone via England
S. rubra subsp. *rubra* Brunswick Co., North Carolina
S. rubra subsp. *rubra* "mixed clones"
S. rubra subsp. *rubra* "wavy lid" North Carolina
S. rubra subsp. *alabamensis*
S. rubra subsp. *gulfensis* "stocky form" Yellow River, Florida
S. rubra subsp. *gulfensis* "large form, wavy lid" Yellow River, Florida
S. rubra subsp. *gulfensis* "large form" Yellow River, Florida
S. rubra subsp. *gulfensis* "clone via England"
S. rubra subsp. *jonessii*
S. rubra subsp. *wherryi* "coppery bronze plants, with possibilities of *S. leucophylla* very white top crosses, almost like miniature *S. leucophylla*" Cienium Fields, Perdido, AL
S. rubra subsp. *wherryi* "cultivated clone via U.S.A."
S. rubra subsp. *wherryi* "Chatom giant"

Pygmy Drosera \$10 per species

Over 3 months (May to July 2000) Western Australian pygmy *Drosera* will be producing gemmae (Vegetative buds). Gemmae buds are the easiest and most successful method to establish these species into your collection.

Some species may not produce enough gemmae to supply all C.P. growers requirements. Therefore you need to let us know what you require before hand. (include substitute list if you wish). e.g. I require [8] species.....My selection in order of preference is item.....1,2,3,4,5,6,7,8,9,10,11,12 etc.

Once we have your requirements, we will send the species you requested as they become available. We must however have your selections by the end of April 2000.

Send no payment now. Payment to be made by return mail as you receive each batch of species. Depending on species selected you may receive your selections in 2-3 lots over the 3 month period.

Each species supplied consists of enough gemmae material to establish that species into your collection. The \$10.00 price per species includes airmail postage. Payment by return mail as each pygmy *Drosera* batch is supplied to you. **Minimum order 6 species.** Minimum order customers please add substitutes in order of preference to ensure the minimum 6 species can be supplied to you.

Please mark box with number of species to be supplied. Note! if box is marked [all] you may not be supplied all selected but will be supplied with as many as are available in this period.

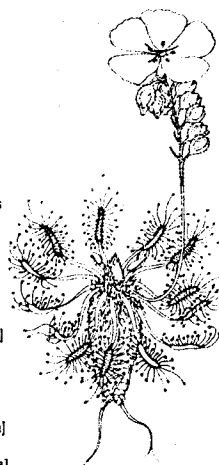
Where some of the colours are coded, e.g. *D. pulchella* {red 52A} etc....this code refers to the "R.H.S. colour chart" printed by The Royal Horticultural Society, London.

Please PRINT your name and address in BLOCK LETTERS.

NAME.....
ADDRESS.....
.....

I require [] species to be supplied from my selection below.

D. androsacea Diels
D. barbigera Planchon
D. callistos Marchant & Lowrie [TYPE], [Brookton form]. = *D. sp. "The Lakes"*
D. citrina Lowrie & Cartquist = *D. rechingeri* "in C.P.A. vol 2., 1st printing"
D. closterostigma Marchant & Lowrie = *D. sp. "Cataby"*
D. dichrosepala Turz.
D. echinoblastus Marchant & Lowrie = *D. sp. "Coomallo"* [*D. echinoblasta*]
D. eneabba Marchant & Lowrie = *D. sp. "Eneabba"*
D. enodes Marchant & Lowrie = *D. sp. "omissa-Marchant"*
D. ericksoniae Marchant & Lowrie = *D. sp. "Erickson's-omissa"* [*D. ericksonae*]
D. grievii Lowrie & Marchant = *D. sp. "Baanga Hill"*
D. helodes Marchant & Lowrie = *D. sp. "Bullsbrook"*
D. hyperostigma Marchant & Lowrie = *D. sp. "Platy-O'Brien"*
D. lasiantha Lowrie & Cartquist = *D. sp. "Porongurup"*
D. leioblastus Marchant & Lowrie = *D. sp. "Steve's-paleacea"* [*D. leioblasta*]
D. leucoblasta Benth. [Brookton form], [Giant form, Cranbrook]
D. mannii Cheek = *D. sp. "Bannister"* [*D. manniana*]
D. microscapa Debbert
D. miniata Diels [TYPE], [Coomallo form], [Giant form]
D. nitidula ssp. *nitidula* Planchon
D. nitidula ssp. *nitidula* X *D. ericksoniae*
D. nitidula ssp. *nitidula* X ? = *D. X Carbarup* "multi-pink flowers"
D. nitidula ssp. *nitidula* X *D. pygmaea* "Western Australian form"
D. nitidula ssp. *allantostigma* Marchant & Lowrie = ssp. "long scapes"
D. nitidula ssp. *allantostigma* X *D. ericksoniae*
D. nitidula ssp. *leucostigma* Marchant & Lowrie = ssp. "White stigmas"
D. nitidula ssp. *omissa* (Diels) Marchant & Lowrie
D. nitidula ssp. *omissa* X *D. occidentalis* = *D. sp. "Lake Badgerup"*
D. nitidula ssp. *omissa* X *D. pulchella*
D. nivea Lowrie & Cartquist = *D. rechingeri* aff. "White flowers"
D. occidentalis ssp. *occidentalis* Morrison [TYPE], [Beeremullah form].
D. occidentalis ssp. *australis* Marchant & Lowrie [TYPE], [Warriup form]. =ssp. "South Coast"
D. oreopodium Marchant & Lowrie = *D. sp. "Armadae"*
D. paleacea ssp. *paleacea* DC.
D. paleacea ssp. *trichocaulis* (Diels) Marchant & Lowrie
D. parvula Planchon
D. platystigma Lehm.
D. pulchella Lehm. [red 37B + red centre], [red 52A], [red 52B], [red-purple 69A], [orange], [red-purple 72C],
[Almost white + red centre], [Clean white + red centre], [Orange + red centre], [pale-pink + red centre, Karridale],
[Coral-pink + red centre, Scott River], [Coral-pink + red centre, Karridale], [Orange + maroon centre], [Pink + dark-
purple centre, Scott River], [Red-purple 73 B, Esperance], [purple + maroon centre], [Orange + dark-red-almost
black centre, Baker's Junction].
D. pycnoblata Diels
D. pygmaea DC. [East Australia form], [West Australia form], [New Zealand form], [All green N.Z.].
D. rechingeri Strid. = *D. coolamon* "in C.P.A. vol 2., 1st printing"
D. roseana Marchant & Lowrie = *D. sp. "Steve's-dichro"*
D. sargentii Lowrie & Marchant = *D. sp. "Esperance"*
D. scorpioides Planchon [White], [Pink], [Gidgegannup form].
D. sewelliae Diels
D. silvicola Lowrie & Cartquist = *D. sp. "North Bannister"*
D. spilios Marchant & Lowrie = *D. sp. "Mucnea"*
D. stelliflora Lowrie & Cartquist = *D. enodes* aff. "Jindong"
D. walyunga Marchant & Lowrie = *D. sp. "Walyunga"*



Drosera silvicola

If we discover any new items not listed above would you like them sent to you.....[YES].....[NO].....Please tick your answer.